

SONY

SONY

NABSHOW<sup>®</sup>  
Where Content Comes to Life

## Post NAB 2017 Line-Up Sony Broadcast & Professional

June 2017

**ON-AIR** | **BROADCAST**

On-Air BC Systems Limited

2 Copper Beech House, Heathside Crescent  
Woking, Surrey, GU22 7BB  
United Kingdom

Tel/Fax: +44 (0)1483 722690

Mobile: +44 (0)7971 805977

Email: [sales@on-airbroadcast.co.uk](mailto:sales@on-airbroadcast.co.uk)

Web: [www.on-airbroadcast.co.uk](http://www.on-airbroadcast.co.uk)



# Summary

- **Optical Disk Archive System : Cartridges, drive & libraries..... p. 3**
- **XDCAM Line Up : Camcorders & Decks..... p. 9**
- **“Live Production” Broadcast : Studio Cameras..... p. 21**
- **“Live Production” Broadcast : PTZ Cameras & Anycast Touch..... p. 27**
- **“Live Production” Broadcast : IP Transmission & IP Live ..... p. 33**
- **Switchers and Production Server..... p. 37**
- **SONY Digital Cinema Camera Line-Up..... p. 43**
- **Monitors..... p. 47**
- **Audio..... p. 51**

# Optical Disk Archive System

Cartridges, drive & libraries



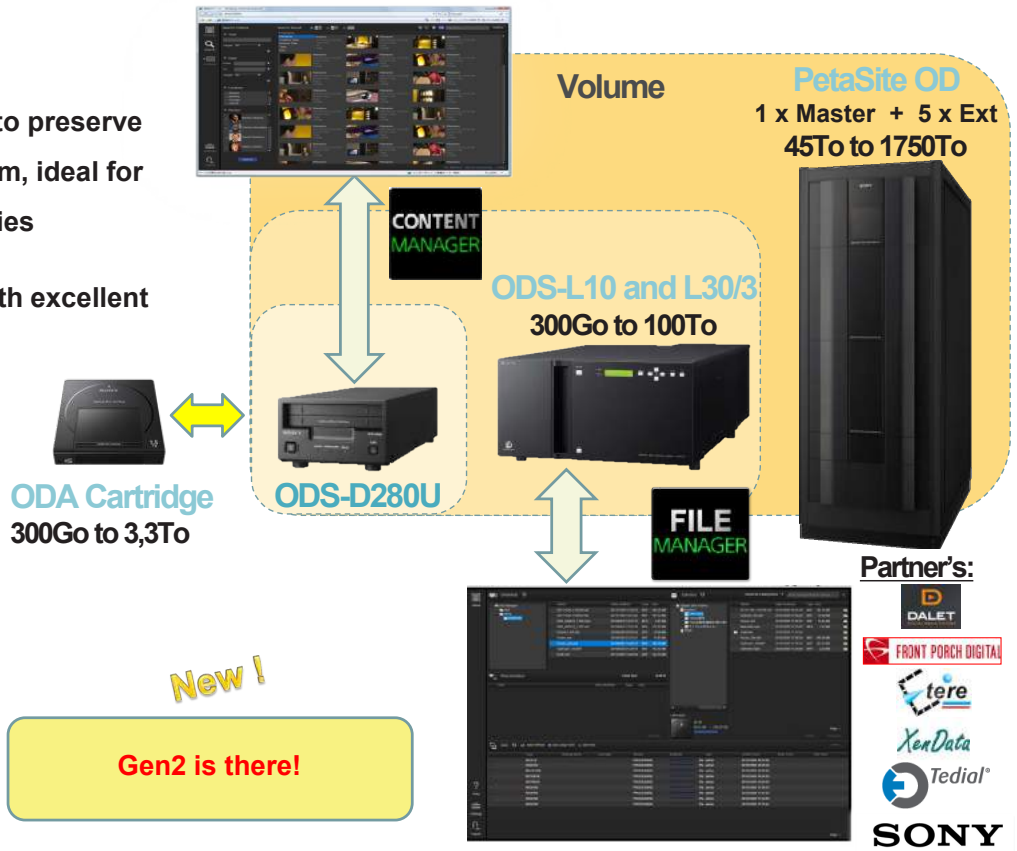
SONY PROFESSIONAL

SONY

# Optical Disk Archive

- Robust and Secure Storage solution to preserve your valuable content for the long term, ideal for North Africa and Sub-Saharan countries
- **100 years** deep long term archives with excellent backward compatibility

- **Benefits:**
  - Reliability
  - Economic
  - Quick Access
  - High Speed
  - Long Term
  - Easy
  - Scalable



# Archive – Messages



Optical Disc Archive

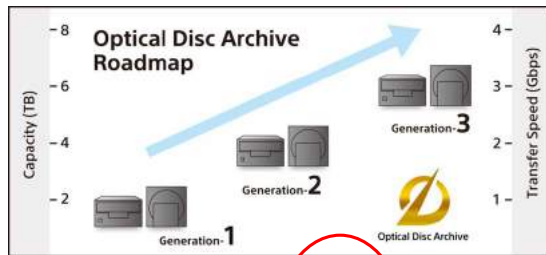


# Customers

Vatican CTV	CCTV	Sun TV Inde	KYOBO
Golf Channel	Artear	UAE Armed forces	SKY Perfect
TV Globo	FOX	Brésil – TRTPR	JRA
Weather Channel	Skylife TV	TV2 – Danemark	NPA
N1 Serbie	Gibraltar TV	SBS TV japon	FUJITA Eye
TVRM Roumanie	NFB	Nigeria Super Sport	NIED
JYSKE Bank	BTV	Ouganda UBC	TV Tokyo
Universités	JICA	KRA	NBN
Mairies	CBS	White House C.A	DISA
Ministères	POLSAT	NASA	ZDF

## ODA - Gen 2 *New!*

- New Drive (**ODS-D280U or F**) and 3.3TB cartridge (**ODC-3300R**)
- Performance and Capacity is 2X of Gen 1
- Gen 2 is Write Once only
- Gen 2 is backward compatible with Gen 1
- Gen 2 is 100 years archival life

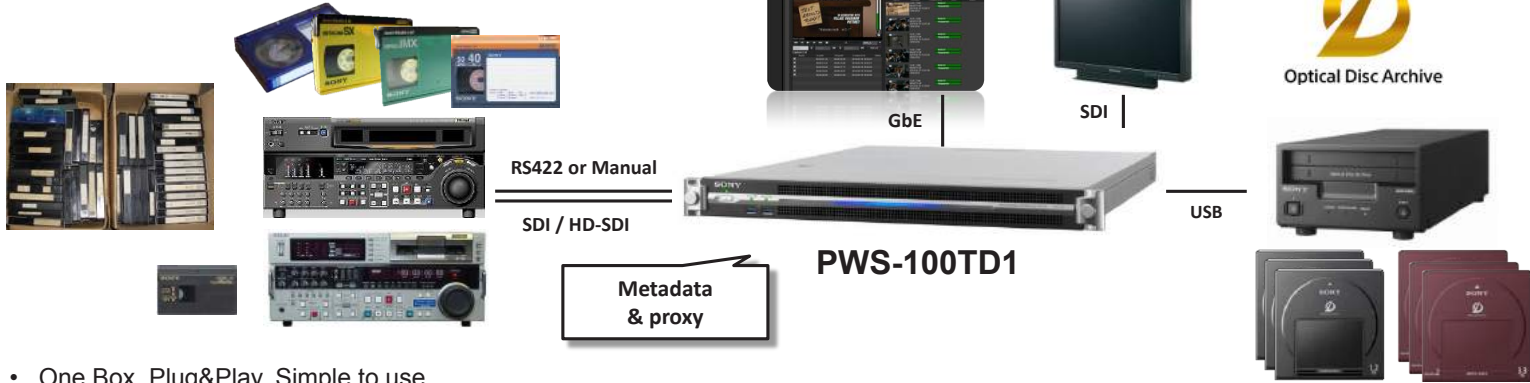


		Generation-1	Generation-2	Generation-3
Capacity		Up to 1.5TB	3.3TB	6TB
Transfer Speed	Read	Up to 1.1Gbps	2Gbps	3Gbps
	Write (w/Verify)	Up to 440Mbps	1Gbps	1.5Gbps



# Tape Digitisation and Archive

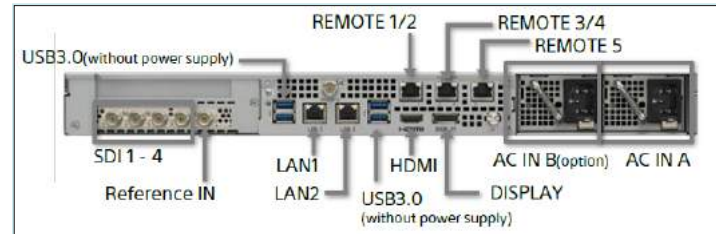
## PWS-100TD1 Tape Digitizing Station



- One Box, Plug&Play, Simple to use
- Offers Direct Digitise to ODA function
- Flexible operation I/O (VTR/ODA: 2/2, 3/1 or 4/0)
- 5TB On-Board Storage (150Hrs@50Mbps)
- Multi codec support: XAVC, MPEG2 HD422/420, IMX30,40,50
- USB 3.0 Direct Connection to ODS-D77U
- Includes QC functionality
- Good integration with MAM Navigator X
  - HiRes -> ODA
  - MetaData/Proxy -> Media Navigator

1.5TB ODA = 48 x K7 (60min)  
3.3TB ODA = 100 x K7 (60min)

SONY PROFESSIONAL



# MAM Navigator X

## Content Management and Workflow Solution

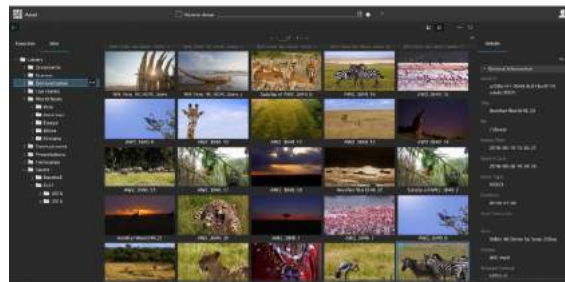
- Powerful and affordable content management and workflow solution
- Perfect fit for today's smaller and medium sized production environments
- Manage all phases of your content workflow – from ingest, catalogue and editing to review, approvals, distribution and archive.
- Flexible and effortlessly scalable (**Core License + Extra User License + Archive Manager + Production Option + Workflow Manager + Plugins** : Telestream Episode & Adobe Premiere)

### Main features

- Intuitive GUI operation
- Use standard web browsers
- Powerful and simple-to-use search function.
- Quick and easy proxy video preview.
- Any file type, including video and non-video, can be imported.
- Wide range of video formats can be imported from SD, HD and 4K.
- Interfaces for integrations with external systems, like Archive, Non linear Editors, and Transcoders.



- Flexible server platform selection based on different bandwidth requirements.
- Optional "**Catalyst Prepare**" for XDCAM import (Optical Disc and SxS Card)
- Good level of Metadata management
- Exportation of your content to the cloud, or to a social media channel. NavigatorX can also upload directly to an FTP server or any location on your network.
- Workflow Automation



**Note :**

SONY PROFESSIONAL

**SONY**



# XDCAM Line Up

Camcorders & Decks



SONY PROFESSIONAL

SONY

## PXW-Z450

### 4K

New!



- First 2/3" 4K UHD shoulder camcorder with Single EXmor R sensor
- S log3 and Hybrid Log Gamma build-in
- 150p/180p High Frame rate in HD center scan
- High Quality and Efficiency codecs
  - XAVC up to 3840 x 2160 50p/60p
- 4K Upgrade kit for PXW-X400 available **CBK-Z450UK**

## PXW-Z150

### 4K

New!



- 1.0 type stacked CMOS RS sensor 20M
- 120fps HFR
- 5x HD slow-motion
- High resolution 4K XAVC recording
- Clear Image Zoom (x18 en 4K, x24 en FHD)
- Recording format:
  - XAVC L (4K QFHD & Full HD) 100Mbps
  - MPEG2 HD
  - AVCHD
- Built-in WiFi for streaming and FTP upload
- Remote control using CBM
- Compact and light weight 1.9Kg
- 3 independent lens rings
- MI-SHOE connection
- 3G-SDI and HDMI connections
- Dual media slots for recording flexibility

# Camcorders XDCAM HD 422 & XAVC ..... 2/3" Shoulder Type

## Optical Disc Camcorders

PFD Cost  
< 1€ /Go



**PDW-680**  
3 x 2/3 CMOS Exmor  
Camcorder HD/SD



**PDW-850**  
New 3 x 2/3" CCD Sensors  
Camcorder HD/SD

62dB – F12@50Hz  
Body: 4,2Kg  
Approx. 37W  
WiFi/3G w/ CBK-WA100  
**System Camera w/ CA-TX70**

## SxS Card Camcorders

SxS cost  
> 10€ /Go



W/ Adaptor

**New !**  
4K Upgrade :  
CBK-Z450UK



**PXW-X400 or KF or KC**  
3 x 2/3" CMOS Exmor  
62dB - F13@50Hz  
Built-in NFC / Wifi / RJ45  
Approx. 22W  
**System Camera w/ CA-TX70**



**PXW-X500**  
New 3 x 2/3" CCD Sensors  
Multi Codec (ProRes & DNxHD)  
**S&Q 120fps**

60dB – F12@50Hz  
Body: 3,8Kg  
Approx. 37W  
Built-in WiFi/3G  
**System Camera w/ CA-TX70**

# Camcorders XDCM HD 422 & XAVC..... 1/2" Type

## SxS Card Camcorders

XAVC



**PXW-X200**  
 3x 1/2" CMOS Exmor  
 High Quality Handy Camcorder  
 17x Zoom Lens  
 SD/HD420/422/XAVC  
 Built-in WiFi & NFC

**V2.21**

SONY PROFESSIONAL

XAVC



**PMW-300K1 or K2**  
 3x 1/2" CMOS Exmor  
 Semi Shoulder Camcorder  
 14x or 16x Zoom Lens interchangeable  
 SD/HD420/422/XAVC  
 CBK-WA100  
 SDI output  
 GenLock & TC I/O  
 Remote Control w/Protocole 700

**V1.51**

XAVC



**PXW-X320**  
 3x 1/2" CMOS Exmor  
 Shoulder Camcorder  
 16x Fujinon Lens  
 SD/HD420/422/XAVC  
 CBK-WA101  
 SDI output  
 60dB - F12@50iHz  
 Flash band Reducer  
**System Camera w/ CA-TX70**  
 Body: 3,4Kg

SxS cost  
 > 10€ /Go

SxS



W/ Adaptor  
 Memory Stick



SONY

# Camcorder XDCAM HD 422 & XAVC..... 3 sensors 1/3 "

## SxS Card Camcorders



### PXW-X160

3x 1/3 " CMOS Exmor

- Handy camcorder
- F10 & S/N : 60 dB
- 25x Zoom Lens
- XAVC, HD422, AVCHD & DV
- SDI output
- 2 x slot SxS

V4.0



### PXW-X180

3x 1/3 " CMOS Exmor

- Handy camcorder
- F10 & S/N : 60 dB
- 25x Zoom Lens
- XAVC, HD422, AVCHD & DV
- SDI output
- 2 x slot SxS
- WiFi, GPS, NFC

V4.0



# Camcorders XDCM XAVC .....Entry level

## SxS Card Camcorders



**HXR-NX100**  
 1.0-type CMOS Exmor R  
 20MPx  
 x48 zoom (Optical + Ext)  
 Compact Camcorder  
 Independent Zoom, Focus & Iris  
 XAVC S 50Mbps, AVCHD, DV  
 ND Filter x4  
 2 x slot SD card



Multi Interface Shoe

V3.0

**PXW-X70**  
 1.0-type CMOS Exmor R  
 20MPx – 4K Upgradable  
 x12 zoom Zeiss  
 Compact Camcorder  
 XAVC Long 422 10bit MXF  
 3G SDI output  
 2 x slot SD card  
 Built-in WiFi/GPS/NFC  
 MPEG2 HD 4:2:2 option (CBKZ-SLMP)  
 Ustream compatibility  
 Qos Streaming compatibility



New!

HXR-NX5R

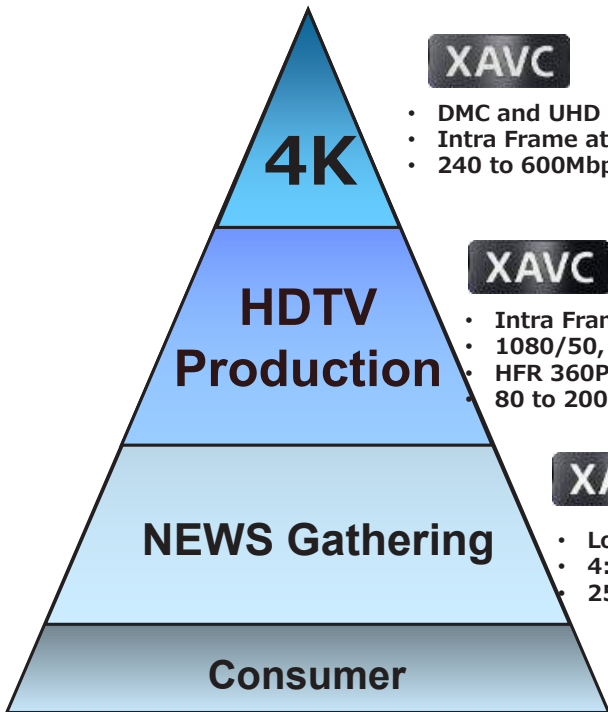
- 3 x 1/2.8" CMOS Exmor
- x20 zoom (x40 Clear Image Zoom)
- Zoom, Focus, Iris independent rings
- XAVC S 50Mbps Full HD, AVCHD, DV
- ND Filter x3
- 2 x slot SD card for Simul Rec, Relay, Backup
- Multi Interface Shoe
- Built in LED light
- Built in WiFi
- OLED EVF & LCD screen
- 3G SDI output
- LANC Remote 100m w/ RM-30BP
- 1 x RM-30BP can control 3 cam (50m maxi)

SONY PROFESSIONAL

SONY



# XAVC Format and Product Implementation



## XAVC

- DMC and UHD
- Intra Frame at Modest Bit Rate
- 240 to 600Mbps



PMW-F55



PWS-4500



PXW-FS7



PMW-PZ1

## XAVC

**HDTV  
Production**

- Intra Frame
- 1080/50, 60P
- HFR 360P
- 80 to 200Mbps



PMW-F5



PXW-FS5



XDS-PD2000



PDW-HD1550



PMW-1000



PXW-X500



PXW-X400

## XAVC

**NEWS Gathering**

- Long GOP
- 4:2:2 10bit
- 25, 35 and 50Mbps



PXW-X160/X180



PXW-X200



PMW-300



PMW-RX50

## XAVC S

- Long GOP
- 4:2:0 8bit
- 50Mbps



HXR-NX100



HXR-NX5R



CBK-WA100/101

## HVL-LBPC

### LED Battery Video Light

- Powered by BP Series or L Series batteries
- High intensity Light: 1800lux/1m and 2100lux/1m w/ Blight booster mode
- Variable color temperature adjustment 3.2K to 5.6K
- MI (Multi-Interface) Shoe for on/off control from the PXW camcorder



ni Multi Interface Shoe

## SMAD-P3

### Multi-Interface Shoe adapter

- Cable-free attachment of the UWP-D series wireless microphone receiver unit
- Transfer of audio signals from the receiver to the camera
- Allows for feeding power from the camera to the receiver



# Camcorder XDCM : ..... Wireless System Wifi / 3G / 4G

## Camcorders w/ Built-in Wireless (Wifi / 3G / 4G )

PXW-X500/X400



PXW-X200/X180



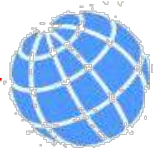
CBK-WA100 /101 for other models (850/700/X320/300, ..)



## Receiver

**Réseau Mobile  
3G, 4G/LTE**

**Server or  
Cloud**



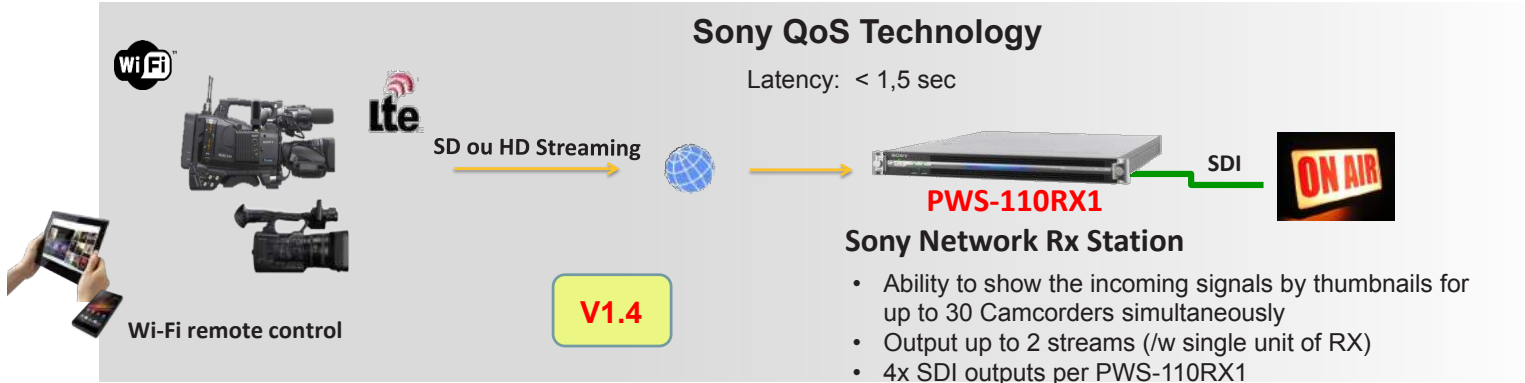
**Live Streaming with  
Sony Server  
QoS Technology**

Latency: < 1,5 sec



- 1x user can control 10 x streams
- Up to 2x simultaneous outputs (2<sup>nd</sup> w/ option - license key)
- 4x SDI outputs per PWS-110RX1

# Camcorders XDCM : .....Live Streaming Workflow



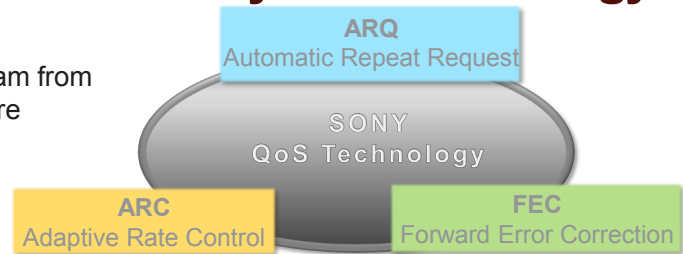
## Network Rx Station: PWS-110RX1

- Network Rx Station for Live Streaming and File Transfer
- Uses Sony's unique QoS technology, when receiving live stream from Sony's camcorders that have a built-in wireless capability or are equipped with CBK-WA100/101 adapters



SONY PROFESSIONAL

## Sony QoS Technology



**SONY**

# Decks XDCAM HD 422 and XAVC

SONY

## Hybrid Decks - SxS Card and Optical Disc



**XDS-PD1000 / 2000** XAVC

XDS Server – HDD 1T / SSD 500 Go



Editing + VO

**PDW-HR1 / PDW-HR1/MK1**

XDCAM Field Deck w/ SxS Card Slot Option



## Optical Disc Decks



**PDW-U2**

XDCAM Disc Drive

USB 3.0 HDD

New!



50i,25p,24p

USB 3.0 HDD/SBAC

**PDW-HD1550** XAVC

"No I-Link"



**PDW-HD1200**

Professional Disc Recorder 50i

"No AES In/Out"



**PDW-F1600**

Professional Disc Recorder 50i,25p,24p

+ Editing



## SxS Card Decks



**XDS-1000**

XDS Server – HDD 1T - SxS



**PMW-1000**

SxS Memory Recorder

USB 3.0 HDD

XAVC

**PMW-RX50**

Portable SxS Memory Recorder



XAVC

**SBAC-US30**

SxS Memory Card Reader

Power USB 3.0

USB HDD/CBK

**Note :**

SONY PROFESSIONAL

**SONY**



# “Live Production” Broadcast

## Studio Cameras



SONY PROFESSIONAL

SONY

# Sony Studio Camera Full 4K

## 4K / HD / IP / Slow Mo - Live HDR

<p><b>Slow Motion</b> 8x</p> <p>-</p> <p><b>Fibre</b> 10Gbits</p>	 <p><b>HDC-4300</b></p>	<p>3 x 2/3" CMOS Full 4K</p> <p>Wide Colour Space Prism</p> <p>HD HFR: 2x, 3x, 4x, 6x, 8x (Option)</p> <p>4K HFR: 2x (Option)</p> <p>4K: HDR (Option)</p> <p>4K &amp; QFHD: 50P, 60P, 25P, 24P</p> <p>RCP, HDVF, MSU, HDLA compatible</p>	<p>New BPU / HDCU combined model for HDC-4300 (2RU)</p>  <p><b>HDCU-4300</b></p>	<p><b>3x 2/3" Full 4K</b></p> <p>S/B: 62dB</p> <p>F12 @ 2000 Lux (HD)</p> <p>Dynamic F.A</p> <p>S-Log3 &amp; S-Log2</p> <p>BT.2020</p> <p>Flicker corrector</p> <p>Follow Focus function</p>	<p><b>4K</b></p> <p>1080i / P</p> <p>Up to</p> <p><b>400 i / sec</b></p>
<p><b>Slow Motion</b> 16x</p> <p>-</p> <p><b>Fibre</b> 10Gbits</p>	<p><b>New!</b></p>  <p><b>HDC-4800</b></p>	<p>New 4K Camera, S35mm 4K Single sensor w/GS, PL mount</p> <p>Flicker Free</p> <p>Ultra Slow Motion :</p> <ul style="list-style-type: none"> <li>• 4K HFR: 8x (400 i / sec )</li> <li>• HD HFR: 16x (800 i / sec )</li> </ul>	<p>New BPU / Replay Server (4hrs) for HDC-4800</p> <p>SharePlay network</p>  <p><b>BPU-4800</b></p>		<p><b>4K</b></p> <p>Up to</p> <p><b>800 i / sec</b></p>
<p><b>Compact Camera</b></p>	<p><b>New!</b></p>  <p><b>HDC-P43</b></p>	<p>3 x 2/3" CMOS Full 4K</p> <p>Wide Colour Space Prism</p> <p>HD HFR: 2x, 3x, 4x, 6x, 8x (Option)</p> <p>4K HFR: 2x (Option)</p> <p>4K: HDR (Option)</p> <p>4K &amp; QFHD: 50P, 60P, 25P, 24P</p> <p>RCP, HDVF, MSU, HDLA compatible</p>	 <p>HKCU-SM100      HDCU-4300</p>	<p><b>3x Capteurs 2/3" Full 4K</b></p> <p>S/B: 62dB</p> <p>F12 @ 2000 Lux (HD)</p> <p>Dynamic F.A</p> <p>S-Log3 &amp; S-Log2</p> <p>BT.2020</p> <p>Flicker corrector</p> <p>Follow Focus function</p>	<p><b>4K</b></p> <p>1080i / P</p> <p>Jusqu'à</p> <p><b>400 i / sec</b></p>

# Sony Studio Camera 4K / HD / SD - HDR

4K

Latest CCD & DSP



<p>Triax - Fibre</p>	 <p>HDC-2400</p> <p>50P Upgrade HZC-PRV20</p>	<p>HDC-2570</p>  <p>HDC-2500 &amp; HDC-2400/50P</p> <p>4K Upgrade HKCU-2040</p>	 <p>HDC-2500/4K HDC-2400/4K</p> <p>MSU operation</p>	<p>3 x CCD A/N : 16 Bits F11 @ 2000 Lux S/B : 64dB - DNR A.L.A.C. 2 - F.A.I. Digital Extender Giga Ethernet Trunk Line Slow Motion 2x</p>	<p>4K 3G 1080P 1080i 720P</p>
<p><b>New!</b> Option 4K &amp; HDR : HKCU-2040 pour HDCU</p>					
<p>Fibre</p>	 <p>HDC-1700</p> <p>50P Upgrade HZC-PRV20</p>	 <p>HDC-1700/3G</p> <p>4K Upgrade HKCU-2040</p>	 <p>HDC-1700/4K</p> <p>MSU operation</p>	<p>3 X CCD A/N : 16 Bits F11 @ 2000 Lux S/B : 62dB - DNR A.L.A.C. 2 - F.A.I.</p>	<p>4K 1080P 1080i 720P</p>

# Sony Studio & Compact Camera 3G / HD / SD

Triax  
&  
Fibre



HSC-100R/RF



HSC-300R/RF



HSC-300R & HDLA-1500

MSU  
operation

3 x CCD  
A/N : 16 Bits  
F11 @ 2000 Lux  
S/B : 60dB  
A.L.A.C.2  
F.A.I.

1080i  
720P

Fibre  
-  
Triax

**New !**



HXC-FB75H ou KC

- Successor of HXC-D70
- Integrating Optical Fiber transmission (Neutrik)
- Fully compatible with HXCU-FB70
- Triax option with CA-TX70
- KC model: 20x zoom Lens, HDVF-L10 and microphone
- Up to 350m w/ hybrid fiber and up to 10Km w/ single mono fiber



3 x 2/3 " CMOS  
F13 @ 2000 Lux  
S/B : 60 dB (NS)  
2x/4x Digital Ext.  
Slow Shutter: 8 frames

1080i  
720P

SDI



HDC-P1

- Compact camera 2/3 inch 3 x CCD Full HD
- A/N 16 bits
- 1080i / 1080P(option) / 720P
- HD/SD-SDI output
- RCP / MSU remote



3 x 2/3 " CCD  
A/N : 16 Bits  
F11 @ 2000 Lux  
3/B : 58dB / 64dB (NS)  
HD ou SD

1080i  
1080P  
720P

SDI



HXC-P70

- Compact camera 2/3 inch 3 x CMOS Full HD
- 1080i / 720P
- Fibre Neutrik or SMPTE ( **New !** )
- HD/SD-SDI output
- RCP / MSU remote

w/ CCU

HXCU-FB70



RCP-1500

3 x 2/3 " CMOS  
F13 @ 2000 Lux  
S/B : 60 dB (NS)  
Servo ND x 4  
500m w/Hyb.F.O  
10Km w/Mono.F.O  
SLS: 64F  
Gain: Up to +48dB  
Zoom & Focus control by RCP

1080i  
720P

Fibre

# Sony Studio Camera ..... Accessories

## Camera Adaptor (Fibre & Triax) for camcorder

Triax  
-  
Fibre

For:  
PDW-850  
PXW-X400  
PXW-X500  
PXW-X320

**CA-FB70** (Fibre)



**CA-TX70** (Triax)



## Fibre Accessories



CCFN-JC1  
Joint Adaptor Neutrik - Neutrik



HXCE-FB70  
Adaptor Neutrik - Monomode  
+ Power Supply

## New Viewfinder

- 0.7- inch Full HD (1920x1080) **OLED**
- High contrast, no LCD delay, Blur free
- HDVF 20pin Interface
- 2 Assignable buttons including HiEYE view
- 3.5-inch QHD (960 x 540) sub-LCD panel ( HDVF-EL30)
- Tally & Camera number display on LCD (HDVF-EL30 )

HDVF-EL20

**New !**

HDVF-EL30



HDVF-L10

**New !**



- QHD **LCD** color Viewfinder
- 3,5 inches
- HDVF 20pin Interface

**Note :**

SONY PROFESSIONAL

**SONY**



**“Live Production”**

**Broadcast**

**PTZ Cameras & Anycast Touch**



SONY PROFESSIONAL

SONY

# PTZ Cameras – BRC Line Up

## BRC-H900



3 x 1/2 " CMOS EXMOR sensor  
HD/SD  
14x Optical Zoom  
Horizontal resolution > 1,000 lignes TV  
F10 @ 2000 Lux  
Advanced Color Adjustment  
IP Option: BRBK-IP10

## BRC-H800



New!

Mono 1" ExmorR CMOS  
BRC-H800: HD only  
BRC-X1000: 4K/HD  
4K 30p/25p ou 2K 60p/50p  
Zoom Optical: 12x  
Clear image zoom : 24x (HD)  
Clear image zoom : 18x (4K)  
PTZ Motion Sync and Trace Memory  
Gen Lock et PoE+  
2 x dual 3G-SDI output  
1 x HDMI output

## BRC-X1000



PTZ Cameras BRC



## New IP Remote

### RM-IP500

- Easy, ergonomic PTZ control of multiple remote cameras
- Up to 100 Sony BRC/SRG Series PTZ remote cameras controlled via IP network.
- Simple set-up
- Trace Memory
- Store and recall camera presets (Camera angles and settings)
- Up to 5 controllers can operate on a single network
- Adjust camera paint functions for BRC-H900/H800 and X1000  
Master Black, White Balance, Flicker Cancel, Detail, Knee, AE Level, Iris, Gain, Shutter

New!

## IP Remote for BRC cameras

### RM-IP10

Multiple BRC camera control



### RM-IP500

PTZ and camera menu control



New!

### RCP/MSU

RCP/MSU Control

\* With CNA-1 for BRC-H900



# PTZ Cameras – SRG Line Up



## SRG-300H

1 x 1 / 2.8 " CMOS Exmor Sensor  
1080/50P on **HDMI**  
1.4 lux mini  
30x Optical Zoom  
Visca over IP Control  
PoE with SoundControl RC5-S30



## SRG-300SE

1 x 1 / 2.8 " CMOS Exmor Sensor  
1080/50P on **3G-SDI and IP**  
1.4 lux mini  
30x Optical Zoom  
Visca over IP Control  
Streaming



**New!**

## SRG-360SHE

1 x 1 / 2.8 " CMOS Exmor Sensor  
1080/50P on **3G-SDI, HDMI and IP**  
1.4 lux mini  
30x Optical Zoom  
**PoE**  
Visca over IP Control  
Streaming

## PTZ Cameras SRG



SCT Sound Control Technologies

## RM-IP10

IP Remote Control Unit  
IP Network command  
Up to 112 x SRG controlled



# Anycast Touch AWS-750

**Easy to Use**

**One touch Scene operation**

**Stylish**

**Thin and Slide Open New Design**

**All in 1**

**Multi Functionality**

## Features

1ME, 2 Titles + 2 Logo, 2 PinP  
6 inputs, 5 outputs  
SD/HD

## Streaming Encoder:

Flash (H.264/AAC) / RTMP for streaming

## Format/Storage:

XDCAM HD (MXF)  
Internal SSD (192GB) up to 10hrs

## Remote:

RS-422A, VISCA protocols

## GUI Interface:

2 x Intuitive Touch Panel :

1. Transition and sources selection
2. Setting, mixing, titling etc...



**Easy to Use**

**Design**



**All in 1**



Switcher



Audio Mixer



Encoder



Recorder



Titler



Camera Ctrl

# Anycast Touch

- **Auto Tracking**

BRC camera connected to Anycast Touch can track presenter automatically.

- **Flexible PinP Setting**

2x2.5D Resizers effects with borders are now possible

- **Import Title as Template & Text Overlay**

Possibility to upload user text backgrounds/graphic

- **GUI Tally, GPI Tally / VISCA Tally**

Support for broadcast style Tally information

- **VISCA over IP**

IP control of BRC/SRG Cameras

- **HDCP Support**

Possibility to use HDCP protected HDMI sources

- **GUI output from Side HDMI**

Kind of Multi-viewer output





A close-up, artistic photograph of network cables plugged into a switch or patch panel. The cables are illuminated with vibrant green light, creating a sense of motion and data flow. The background is dark, making the glowing green elements stand out prominently.

**“Live Production”**

**Broadcast**

**IP Transmission & IP Live**

SONY PROFESSIONAL

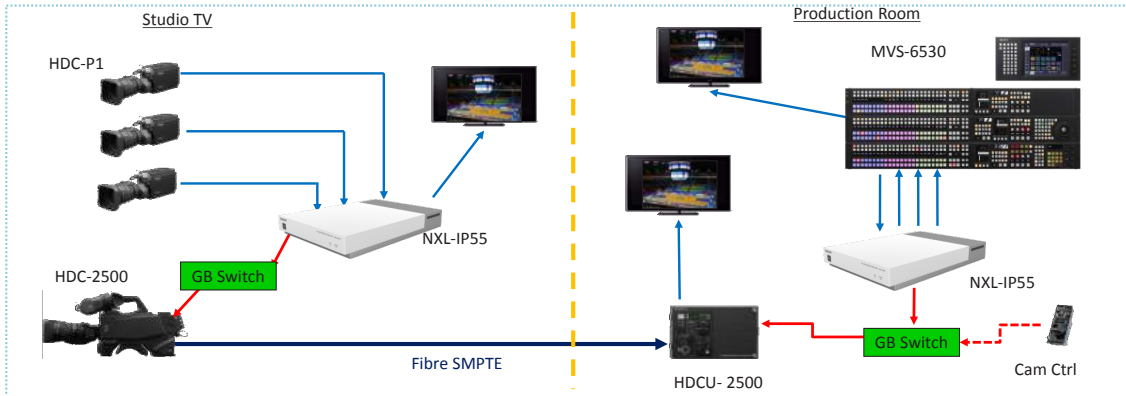
**SONY**

# IP Live Production unit : NXL-IP55

## NXL-IP55



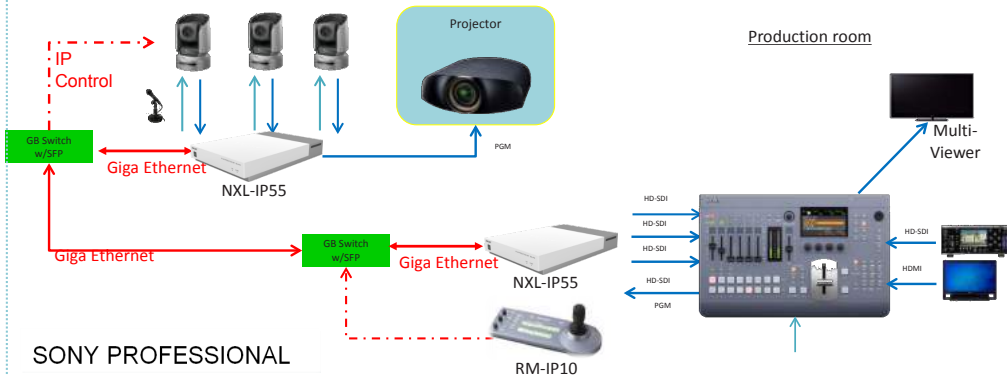
- Ultra low latency HD LLVC Enc/Dec
- Visually loss less Quality
- Full HD Video on 1Gbps using LLVC codec @ 200Mbps with Ultra Low Latency < 20ms
- Genlock over IP – IEEE1588
- Audio / Tally / Intercom / GPIO
- Utilize Standard Network infrastructures



### Studio TV



### Production room



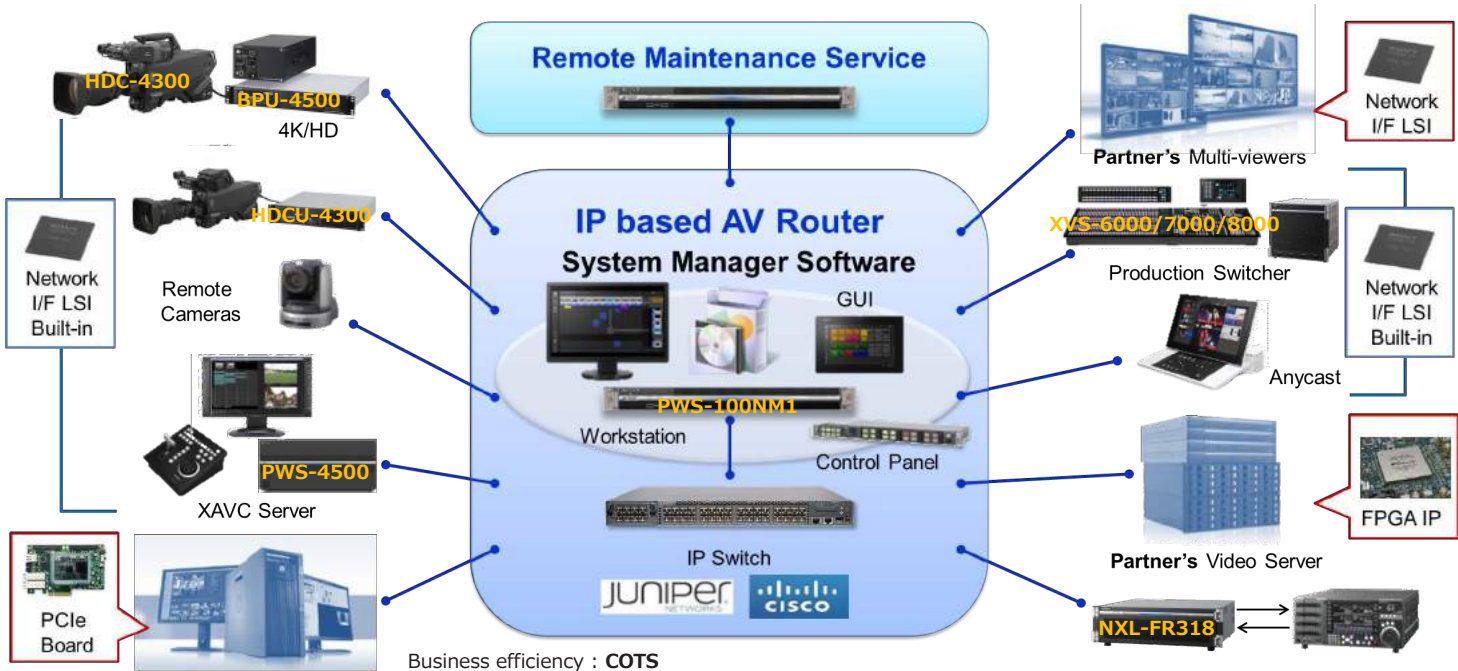
SONY PROFESSIONAL

## NXL-IP55

- Up to four Full HD video streams:
  - 3 In and 1 Out
  - or 2 In and 2 Out
- Supports up to 10 audio channels
- Tallies : 3 Red Tallies and 3 Green Tallies (direction of transition can be selected by color)
- GPIO: 8 Channels (direction of transition can be selected by each four-channel)

SONY

# IP Live Production System



Business efficiency : **COTS**  
 Agnostic Format : **NMI** (SD/HD/4K and beyond!)  
 Open standard support : **SMPTE2022, SMPTE2059**  
 Codec for IP Live : **LLVC** (Low Latency Video Codec SMPTE/RDD-34)  
 Interoperability : With our **Partners**  
 Network Management : **LSM** (Live System Manager)

**NXLK-IP40F** : SDI-IP converter  
**NXLK-IP45F** : AV Mux/DeMux



**Note :**

SONY PROFESSIONAL

**SONY**

# Switchers and Production Server

SONY PROFESSIONAL

SONY

# New Sony Switcher HD/SD - 2017



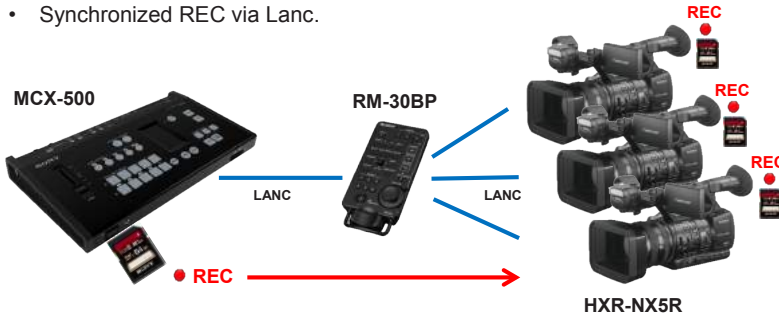
New!

## MCX-500 Multi Camera Live Producer

- 1 M/E
- Mix between 8 video sources (4 x 3G-SDI/2 x HDMI/2 x PAL)
- 4 sources + DSK (VGA input) on keyboard
- VGA input for PC Title
- LCD touch screen
- PinP/Keyer
- Cut/Mix/Wipe
- Logo insertion (SD card)
- PGM record on SD card (AVCHD)
- 1 Mixer 5 channels (XLR + 4 x Embedded)
- Streaming to USTREAM
- Software GUI operation from PC

## Simple Live Solution with Sony Equipment

- Synchronized REC via LANC.



- Tally signal via LANC





# Sony Switcher Line-Up HD/SD



## MCS-8M

- 1 M/E
- 1 Mixer 6 channels
- 1 Key/DVE/Resizer
- 8 In / 4 Out (HD-SDI, HDMI)
- Multi Viewer 4/10
- 2 Aux Mix



3: LCD display  
DVI-D + mouse



1: ICP-6511  
Menu Panel



## MVS-3000A

- 2 M/E
- 3 x Panels, 16 and 24 buttons
  - 2 x Compact: Dim: 665 x 396 and 820 x 396
- 3 x Menu panels
- 4 Keys per M/E
- 32 In / 16 Out
- 2 Multi Viewer (4/10/16)
- 2 DVE 2,5D par M/E
- Frame Memory :
  - 8 simultaneous channels
  - 1000 frames HD (RAM)
- Clip Transition
  - Color Correction RGB
    - All inputs
    - All Aux outputs
  - Aux Bus Mixing
    - [Option](#) : 2 ch DME 3D **MKS-6470**
    - [Option](#): Format converter, Frame synchro, Frame delay **MKS-6550**
    - Advanced Graphic and Server Integration



## MVS-6530

- 3 M/E
- Panel 24 Buttons
- 4 Keys per M/E (M/E 1 and M/E 2)
- 8 Keys per M/E (M/E 3)
- 48 In / 32 Out
- 2 Multi Viewer (4/10/16)
- 2 DVE 2,5D per M/E (M/E 1 and M/E 2)
- 4 DVE 2,5D on M/E3
- Frame Memory :
  - 8 simultaneous channels
  - 1000 frames HD (RAM)
- Color Correction RGB
  - All inputs
  - All Aux outputs
- Aux Bus Mixing
  - [Option](#) : 2 ch DME 3D **MKS-6470**
  - [Option](#): Format converter, Frame synchro, Frame delay **MKS-6550**
  - Advanced Graphic and Server Integration



# Sony Switcher Line-Up 4K/3G/HD/SD and IP

4K

XVS-8000 / 7000 / 6000 Line up

New!



New Modular Control panel ICP-7000X

New!



SONY PROFESSIONAL

SONY

# Sony Switcher Line-Up IP/4K/3G/HD/SD - XVS Switchers

New!

- Future proof IP / 4K production switcher (NMI compatibility, SDI / IP mixing)
- Resource sharing (4K & HD simultaneously) and remote production
- Improved FM system (Internal: 5000i HD, stored on SSD – 20 outputs)
- Range of format conversion options (All inputs and outputs)
- Up to 5M/E with 20, 28 or 36 XPT Module and OLED display (Up to 16 characters)
- Two channel Multi-viewer (4, 10, 13, et 16 screens)
- Virtual Shot Box (Remote application via Ethernet)



ICP-7000X

		XVS-8000		XVS-7000		XVS-6000	
Frame Size		10RU		8RU		6RU	
Format		4K	HD	4K	HD	4K	HD
ME	Standard	5ME	5ME	3ME	3ME	2ME	2ME
	Split	---	10ME	---	6ME	---	4ME
Input		40	160	28	112	12	48
Output	Assignable + FC	12+4FC	48+16FC	12+4FC	48+16FC	6+2FC	24+8FC
	Multi Viewer	2ch (HD)	2ch	2ch (HD)	2ch	2ch (HD)	2ch
Keyer/ME <Resizer>	Standard	2 Full + 2 Sub	8Key	2 Full + 2 Sub	8Key	2 Full + 2 Sub	8Key
	Split	---	4Key	---	4Key	---	4Key
Aux Keyer		1Key	4Key	1Key	4Key	---	---
3D DME		2ch	4ch	2ch	4ch	1ch	2ch



XVS-8000



XVS-7000



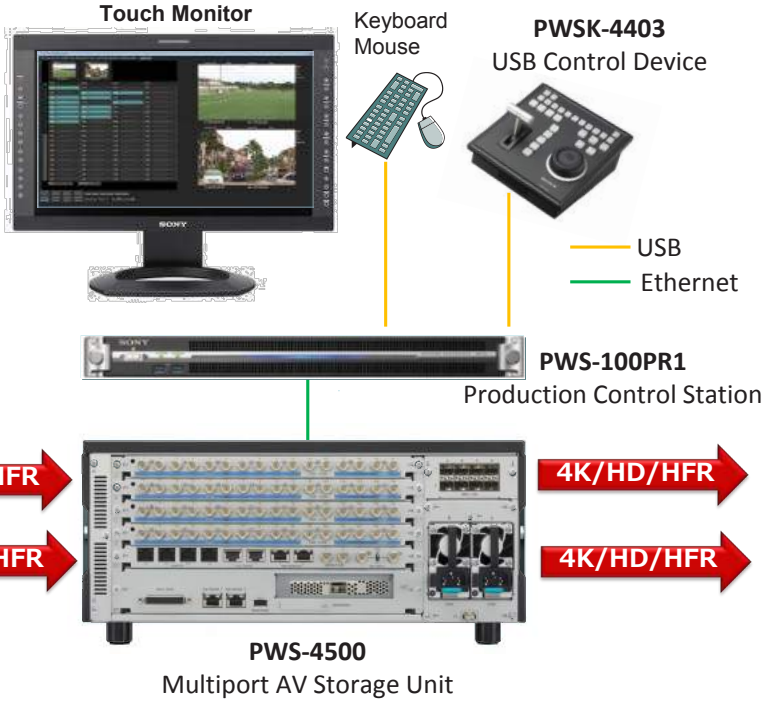
XVS-6000

# New Live & Slo-Mo Production Server HD / 4K / IP

# 4K

## PWS-4500

- 4 x 4K channels (4I, 3I/1O, 2I/2O, 1I/3O, 4O), 2 x 4K Ch as standard
- 8 x HD channels (8I/O, 6I/1O, 4I/2O, 6I/2O) , 4 x HD Ch as standard
- 2Tb as standard, expandable up to 8Tb
- 5 hrs storage @ 4K 50p/59.94p 600 Mbit/s
- Redundant Power Supply as standard
- Use XAVC Codec or DnXHD as option for NLE compatibility
- 4K XAVC Class 480
- Apple ProRes native recording support (HD)
- Supports HDC-4300 HFR features (4K 2x, HD 8x,6x,4x,3x,2x)
- Slow Mo 8x, Up to 400 i/s
- Simultaneous HFR and x1 recording
- NMI Interface
- Option for SDI I/O, IP I/O, 4K, HFR 4x/6x/8x, DnXHD Codec
- Support of Weekly & Monthly Licenses for HFR & 4K





**SONY Digital Cinema Camera  
Line-Up**

**Drama, Movie, Documentary**

**SONY PROFESSIONAL**

**SONY**

# Sony 4K Camera Line-Up

## PMW-F5

4K



EMEA =  
+2000 units

- PL Mount (with FZ/PL mount adaptor)
- Super 35mm 4K Single Image sensor
- Multi Codec internal Rec on SxS Pro+ card : MPEG2 HD422, XAVC HD, XAVC 50p, XAVC HD HFR, HDCAM-SR SStP
- Slow & Quick Motion Function : 1-120p
- **CBK-55PD** : ProRes 4444/422 and DNxHD 422
- **CBK-F55UK**: F5 Upgrade to F55

V8.01

## PMW-F55

4K



- Global Shutter
- Internal Rec **XAVC 4K**  
Option:
  - External Recorder : AXS-R5 with AXS card 512 Go (2,4 Gbps) : 4K RAW up to 60P, 2K RAW Up to 240P
  - Slow & Quick Motion Function :
    - > 1-180p : XAVC 2K/HD
    - > 1-240p : 2K RAW (AXS-R5)
- **External Recorder : AXS-R7**
  - For F5 and F55
  - 120fps in 4K (F55 only)
  - Cache recording & Fast Record start
  - New recording format **X-OCN**
  - New AXS-A512S48 / A1TS48 media card

## F65/RS

4K



- PL Mount
- Super 35mm 8K CMOS sensor - 20 MegaPixel with Global Shutter
- High frame rate recording up to 120fps
- High Sensibility and High Dynamic : 800 ISO, 14 stops
- Rec Format :
  - > Raw : 4K 16 Bits 60p
  - > Video : HDCAM SR 444 et 422

V4.2



# Sony 4K – Camera Line-Up

PXW-FS7M2/K

New! 4K



V4.0

“E Mount”  
**4K Super 35mm Exmor CMOS**  
 11.6 MPx, ISO 2000, 14 stops  
Recording Format  
 4K XAVC Intra & Long  
 HD XAVC-L et XAVC-I  
 MPEG-2 HD  
 HFR : 180 fps  
 Electronic Variable ND filter 1/4, 1/16, 1/64ND  
 Support BT.2020  
 XQD Card x 2  
 SDI Out x 2  
 2Kg / Body  
Option XDCA-FS7 for:  
 GenLock and TC I/O  
 4K/2K RAW recording via AXS-R5  
 ProRes 422 recording

PXW-FS5/K

4K



“E Mount”  
**4K Super 35mm Exmor CMOS**  
 11.6 MPx, ISO 3200, 14 stops

Recording Format :  
 4K XAVC-L  
 HD XAVC-L  
 AVCHD  
 Option MPEG2 HD 4:2:2 (CBKZ-SLMP)

HFR : 8 sec burst 240fps  
 ND variable filters 1/4 to 1/128ND  
 SD Card x 2  
 SDI Out x 1  
 0.8 Kg / Body  
 NFC / Wifi / LAN Built-in  
 MI Shoe

Option CBKZ-FS5RIF for:  
 4K RAW output (w/ HXR-IFR5 + AXS-R5)  
 4K Slo-Mo up to 120fps (4sec cached RAW)  
 2K Slo-Mo up to 240fps (continuous)

V3.0

PXW-X70 + CBKZ-X70FX

4K



ni Multi Interface Shoe



Mono 1” CMOS Exmor R  
 20MPx – 4K Upgradable  
 x12 zoom Zeiss

XAVC

- XAVC Long 422 10bit MXF
- 100Mbps QFHD (w/ CBKZ-X70FX)

- 3G SDI output
- 2 x slot SD card
- WiFi, GPS, NFC

V3.0

- Option MPEG2 HD 4:2:2 (CBKZ-SLMP)
- Ustream compatibility
- QoS Streaming compatibility

New!

**Note :**

SONY PROFESSIONAL

**SONY**



# Monitors



SONY PROFESSIONAL

SONY

# FY17 Monitors line-up

## Master monitors

Reference OLED



BVM-E171



BVM-E251



BVM-X300 V.2



PVM-X550

## Picture monitors

Premium OLED



PVM-A170



PVM-A250

Premium LCD



LMD-941W



LMD-A170



LMD-A220



LMD-A240

## Utility monitors

Basic LCD



LMD-B170



LMD-2110W



HD/SD-SDI Adaptor BKM-341HS



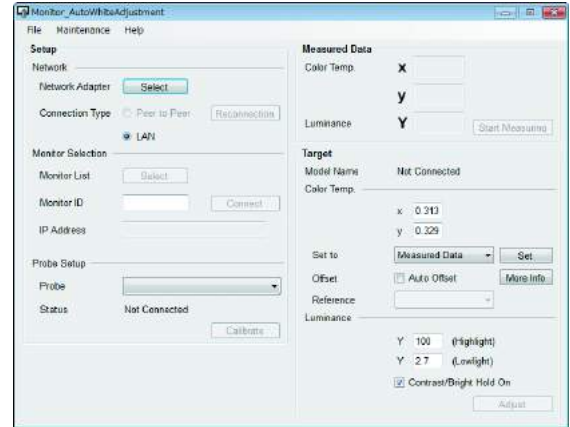
# Auto White Adjustment

## Monitor Auto White Adjustment for BVM/PVM/LMD series



### 10 Applicable Colour Probes

- i1Pro, i1Pro2 (X-Rite)
- CA-210, CA-310, CS-200 (Konica Minolta)
- PM5639/06 (DK-Technologies)
- PR-655, PR-670 (Photo Research)
- K-10 (Klein Optical Instruments)
- Specbos1211 (JETI)



**Note :**

SONY PROFESSIONAL

**SONY**

# AUDIO



SONY PROFESSIONAL

SONY

# New Wide band DWX N Series

Belt-Pack transmitter  
Handled Microphone  
Dual Studio receiver  
Dual camera receiver

DWT-B01N  
DWM-02N  
DWR-R02N  
DWR-S02D

*New!*

## Key features :

- Very low audio latency of 1.5ms
- High quality digital audio sound
  - 24bit, 96KHz, +106dB, 20-22KHz, 470-710MHz
- More reliable RF transmission
- Three codec modes:
  - Mode 1, DWX Series compatible
  - Mode 2, High quality sound and low latency
  - Mode 3, More reliable RF transmission



DWT-B01N +  
ECM-77BC



DWR-S02D



DWM-02N  
+  
CU-F31



DWR-R02N



# Série UWP-D :



UWP-D11  
UWP-D12  
UWP-D16

Body Pack Transmitter and Portable Receiver  
Handled Wireless Microphone and Portable Receiver  
Body Pack Transmitter, Portable Receiver and Plug-on Transmitter

## New receiver and transmitter

URX-P03D 2 channels portable receiver (3 versions cover 470MHz – 694MHz)  
SMAD-P3D MI shoe adaptor for URX-P03D (No cable, powered by the camera)

URX-S03D 2 channels Slot-in receiver (3 versions cover 470MHz – 694MHz)

UTX-B03HR Belt Pack Transmitter with ECM-77BC compatibility

SONY PROFESSIONAL

1. Hybrid Digital System for high quality sound
2. Easy to use  
Large display and small size receiver  
Easy channel setting mode
3. Wide switching bandwidth: 72MHz
4. True Diversity
5. Compatibility with Sony 800 / UWP Series
6. Headphone Output for monitoring
7. USB power operation or charging
8. Sturdy Metal Housing
9. Line Input available  
MIC/LINE switchable
10. Output gain control on receiver



CH21	470 to 542MHz
CH33	566 to 630MHz
CH42	638 to 694MHz

New!



SONY



# Note :

More information on our website:

[www.sony-psmea.com](http://www.sony-psmea.com)



**On-Air BC Systems Limited**

2 Copper Beech House, Heathside Crescent  
Woking, Surrey, GU22 7BB  
United Kingdom

**Tel/Fax:** +44 (0)1483 722690

**Mobile:** +44 (0)7971 805977

**Email:** sales@on-airbroadcast.co.uk

**Web:** www.on-airbroadcast.co.uk

SONY PROFESSIONAL

**SONY**